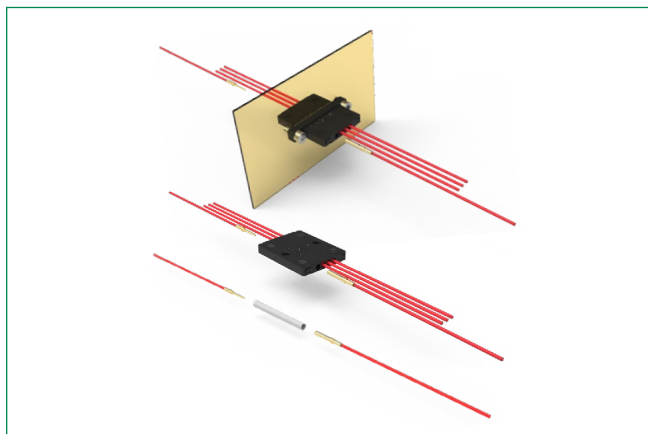


AeroSplice® Series

Reconnectable Wire Solution according to MIL-DTL-24308

With removable D*MA crimp contacts MIL-39029



Specifications

Quality Level	MIL: code MIL-DTL-24308.
Process: Contact and Cable Insertion	Cables crimping onto contacts with standard D*MA Crimping tool M22520/2-01 and locator M22520/2-08 (to be ordered separately). Wires cable installed by the end user.
Test Retention	A dedicated tool is available to make the retention test of each contact in the connectors.
Process: Contact & Cable Extraction	Tool M81969/39-01 with plastic tip is available to remove the contacts from the connectors (1 extract tool delivered per bag).
Packaging	AeroSplice 1 way: 50 pcs per bag. One extract tool M81969/39-01 delivered per bag.
	AeroSplice 4 ways: Individual packaging. One extract tool M81969/39-01 delivered par bag.
	Traceability associated as per MIL-DTL-24308 specifications.

Electrical & Mechanical Characteristics

Characteristic	Specification
Working Voltage - 1 way (sea level)	300 Vrms
Working Voltage - 4 ways (sea level)	250 Vrms
Rated Current	7.5 A
Contact Resistance	5 mΩ (rated current)
Insulation Resistance at 500 V DC	5000 MΩ min
Voltage Proof - 1 way	1250 Vrms / 2.0mA
Voltage Proof - 4 ways	1000 Vrms / 2.0mA
Residual Magnetism Level (NMB)	<200 Gamma
Temperature Range	-55/+125 °C
Radiation Resistance	>1x10 ⁶ Rads
Contact Retention Force	40 N min

Description

Standard wires to wires connecting solution to replace hand splice process. It allow you to connect 2 wires using D*MA crimpable and removable contact technology and designed to accept the most relevant gauges. This series is useful to connect electrical components with limited number of wires (thermistors, heaters...). You can create your own connector where the space is limited. Or I allow you to repair harnesses at a lower cost, because ther is no longer any need to redo complete wiring.

Features & Benefits

- Fast, save time, inspection, easy fast on & release
- Standard solution, no training, no manual splicing
- Easy to assemble and install
- Removable contact assembly
- Designed to cable sizes from to: AWG - 20, 22, 24, 26 and 28.
- Wide operating temperature range
- Suitable for high vibrations (G), space restricted environments
- Use industry standard crimp tool

Applications

- Wiring and difficult to access, hard to route
- Avionics, Defence, Refurbishment
- Compliant with Military specification MIL-DTL-24308

Specifications

- High performance wires to wires connectors MIL, for military and defence applications.
- According to MIL-DTL-24308 Connectors and MIL-39029 Removable Crimp Contacts specifications.
- Suitable for use in high performance military/ aerospace wire to wire applications.
- Removable contacts (D*MA technology).
- Cable sizes: AWG20, AWG22, AWG24, AWG26 and AWG28. 1 way and 4 ways connections available.
- 4 ways variants: Radial fixing mount (Stackable). Axial fixing for panel mount.

Materials & Finishes

Component	Material	Finish
Insulator	PEEK	UL-94-V0, 1 way - natural color 4 ways - black color
Retention Clip	Beryllium Copper Alloy	Raw material
Socket Contacts	Copper Alloy	1.27 μm Gold over Copper underlay
Pin Contacts	Copper Alloy	1.27 μm Gold over Copper underlay

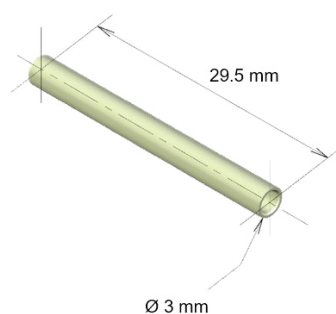
AeroSplice® Series

Reconnectable Wire Solution according to MIL-DTL-24308

With removable D*MA crimp contacts MIL-39029

**AeroSplice® 1 Way, Wire To Wire Connection****Description**

Part #	Description
C115376-0000	AEROSPLICE-1W FR059

Dimensions and Mass

Mass = 0.2 grams

Wires to wires connecting solution

- To crimp pin and Socket D*MA contacts with wires (such as D*MA connectors)
- Insert the contacts into AeroSplice (manually or using D*MA insertion tool).
- For insertion of contacts wired with AWG26/28 (without shrinkable tube), the use of insertion tool is mandatory.
- If different wire sizes are used on each contact side, insert contact with smallest wire size first to perform retention test by pushing.

Use Explanation

AeroSplice® Series

Reconnectable Wire Solution according to MIL-DTL-24308
With removable D*MA crimp contacts MIL-39029



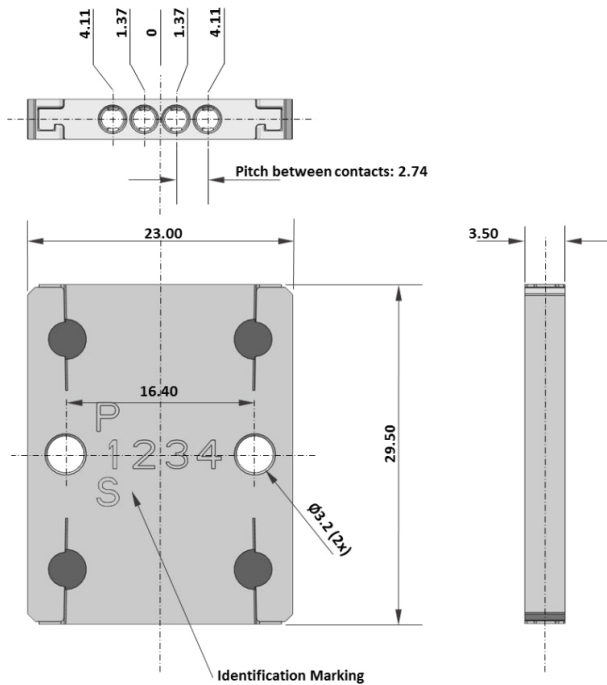
AeroSplice® 4 Way, Radial Fixing Variant, Stackable



Description

Part #	Description
C115376-0001	AEROSPLICE-4W-R-FR059

Dimensions and Mass (mm)



Torque value for Fixing screws

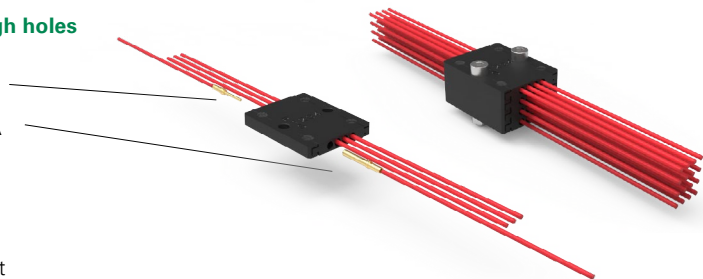
M3	1.18 N.m ±0.02
M2	0.33 N.m ±0.02
2-56 UNC-2A	0.46 N.m ±0.02

Mass = 3.5 grams

Use Explanation

Wires to wires connecting solution Floating or possibility of fixing the insulator using 2 through holes

- To crimp pin and Socket D*MA contacts with wires (such as D*MA connectors)
- Insert the contacts into AeroSplice (manually or using D*MA insertion tool).
- For insertion of contacts wired with AWG26/28 (without shrinkable tube), the use of insertion tool is mandatory.
- If different wire sizes are used on each contact side, insert contact with smallest wire size first to perform retention test by pushing.



Note: Stacking configuration: 16 conductors

AeroSplice® Series

Reconnectable Wire Solution according to MIL-DTL-24308
With removable D*MA crimp contacts MIL-39029



AeroSplice® 4 Way, Axial Fixing Variant, Panel Mount

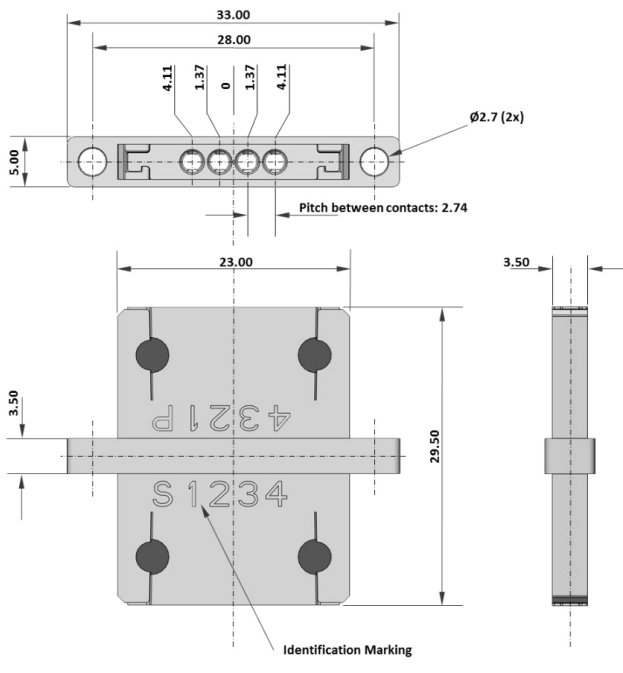


Description

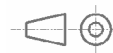
Part #	Description
C115376-0002	AEROSPLICE-4W-A-FR059

Dimensions and Mass (mm)

M2	0.33 N.m ±0.02
2-56 UNC-2A	0.46 N.m ±0.02



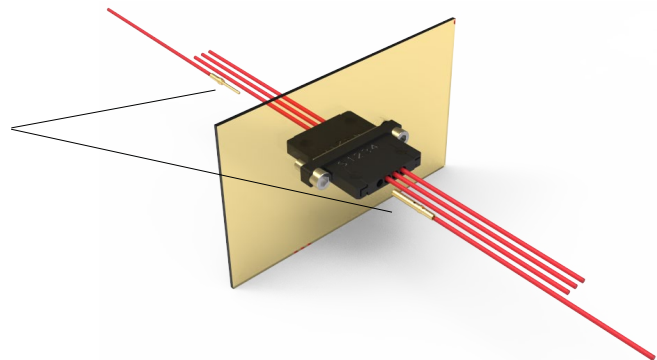
Mass = 4 grams



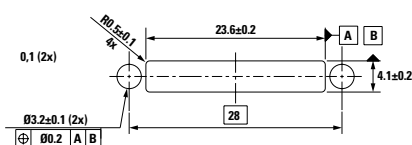
Use Explanation

Wires to wires connecting solution use to pass through panels

- To crimp pin and Socket D*MA contacts with wires (such as D*MA connectors)
- Insert the contacts into AeroSplice (manually or using D*MA insertion tool)
- For insertion of contacts wired with AWG26/28 (without shrinkable tube), the use of insertion tool is mandatory
- If different wire sizes are used on each contact side, insert contact with smallest wire size first to perform retention test by pushing



Panel Cut-Out Profile



AeroSplice® Series

Reconnectable Wire Solution according to MIL-DTL-24308
With removable D*MA crimp contacts MIL-39029

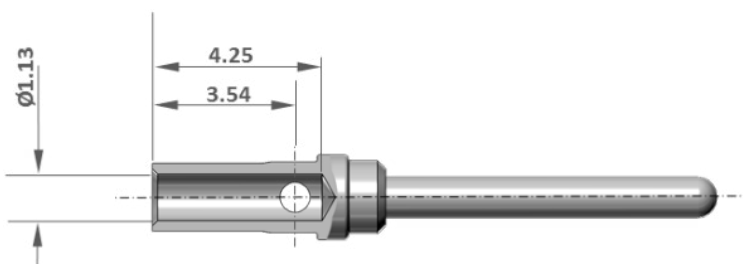
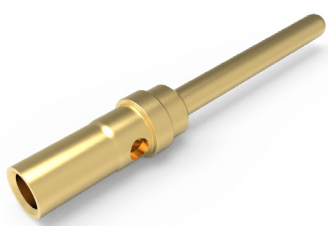


Sizes & Part Numbers

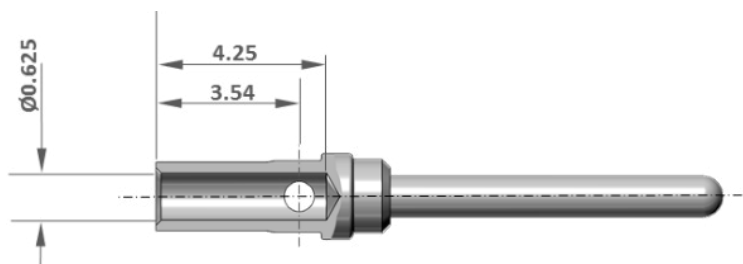
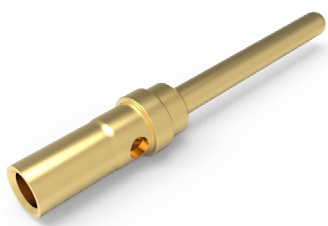
Part Number	Part	Size	Wire Size	MIL Description
C330-5291-037B	D*MA Contact Pin	20/20	AWG20, AWG22, AWG24	M39029/64-369
C330-8997101D	D*MA Contact Pin	20/26	AWG26, AWG28	330-8997-101-FR022
C031-1007-042B	D*MA Contact Socket	20/20	AWG20, AWG22, AWG24	M39029/63-368
C031-8997-101D	D*MA Contact Socket	20/26	AWG26, AWG28	031-8997-101-FR022

Note: Measurements in Millimeters

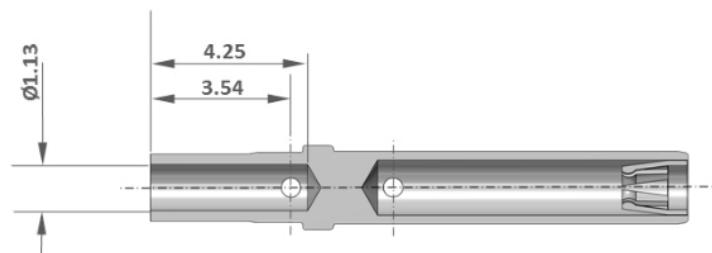
C330-5291-037B Dimensions



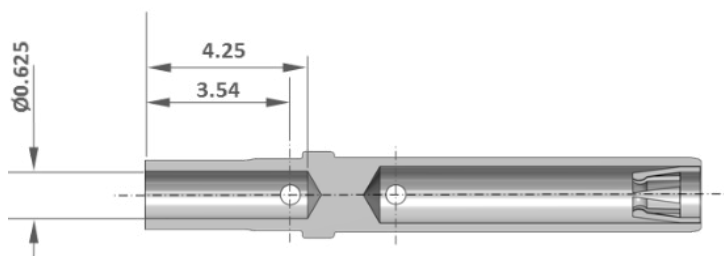
C330-8997101D Dimensions



C031-1007-042B Dimensions



C031-8997-101D Dimensions







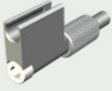
Note: Measurements in Millimeters

AeroSplice® Series

Reconnectable Wire Solution according to MIL-DTL-24308

With removable D*MA crimp contacts MIL-39029

**Accessories**

Accessory Image	Accessory Name	Description	Part #
	Crimping Tool	M22520/2-01	C995-0001-584
	Locator	M22520/02-08	C995-0001-604
	Insertion / Extraction Tool	M81969/39-01	C980-2000-426
 6-32 UNC-2A Compatible with OCETA OCE8	Contact Probe for Retention Tool Push Test ¹	SPLICE-TOOL-RETENTION-01	C115366-2852
 6-32 UNC-2A Compatible with OCETA OCE8	Contact Probe for Retention Tool Pull Test ²	SPLICE-TOOL-RETENTION-02	C115366-2853

Note:

1. Push test recommended value: All wire size: 20N max

2. Pull test recommended value: AWG20, 22, 24, 26: 20N max AWG28: 10N max