

KSC2 TE Series

Tireless Endurance, Sealed Tactile Switch for SMT 6.2 x 6.3 mm, with 3.5mm Height Soft Actuator



Specifications

| | |
|------------------|----------------|
| Function | Normally open |
| Contact Type | SPST NO |
| Terminals | J bend for SMT |
| Contact Material | Silver plated |
| Sealing | IP67 |

Electrical Characteristics

| | |
|-----------------------|------------------|
| Maximum Power | 0.03 VA |
| Min. / Max. Voltage | 1V - 24V |
| Min. / Max. Current | 1 - 3 mA |
| Dielectric Strength | 250 Vrms |
| Contact Resistance | ≤ 100 mΩ |
| Insulation Resistance | (100 V): 1000 MΩ |
| Bounce Time | ≤ 1 ms |

Environmental Characteristics

| | |
|-----------------------|---------------|
| Operating Temperature | -40°C to 90°C |
| Storage Temperature | -55°C to 90°C |

Specifications

| | |
|-----------|---|
| Packaging | In reels of 2,000 pieces Dimensions according to EIA 481 External diameter 330 ± 2 mm |
|-----------|---|

Description

KSC2 TE tireless endurance tactile switch is a new KSC2 configuration with J leads, a soft actuator and a renewed combination of dome and support, upgrading the lifetime up to 10 million cycles. With a size of 6.2 x 6.3 mm and actuation forces at 1.6N, 2.8N and 4N, the switch is perfect for demanding applications such as applications in the industrial segment.

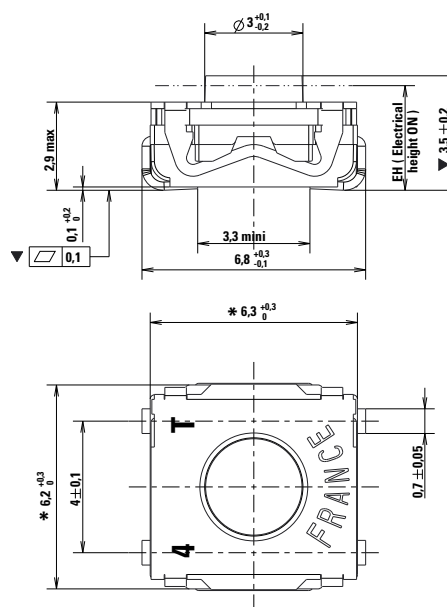
Features & Benefits

- Electrical Height for easier integration due to more precise tolerances
- New combination of dome/support
- Silicone actuator 3.5mm high
- J terminations
- Tape & reel
- IP67

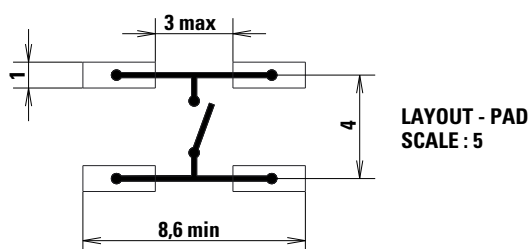
Applications

- Elevator
- Game controllers/ Drones
- Industrial applications
- Medical applications

Dimensions



J Terminations

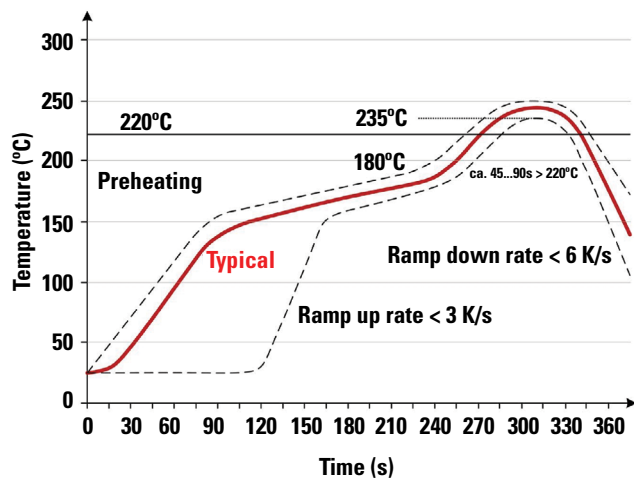


KSC2 TE Series

Tireless Endurance, Sealed Tactile Switch for
SMT 6.2 x 6.3 mm, with 3.5mm Height Soft Actuator



Soldering Profile

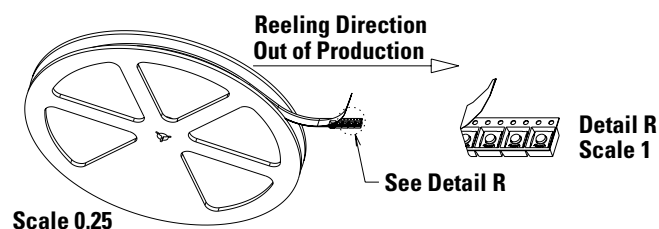


Note: Up to 2 reflow cycles in accordance with the above temperature profile

Soldering process: Depending on the application, this component is suited to the following methods:

- Terminals being silver or gold plated over a nickel barrier, the use of slightly activated flux is suitable.
- Lead free soldering process in accordance with the definition on the left.

Tape & Reel

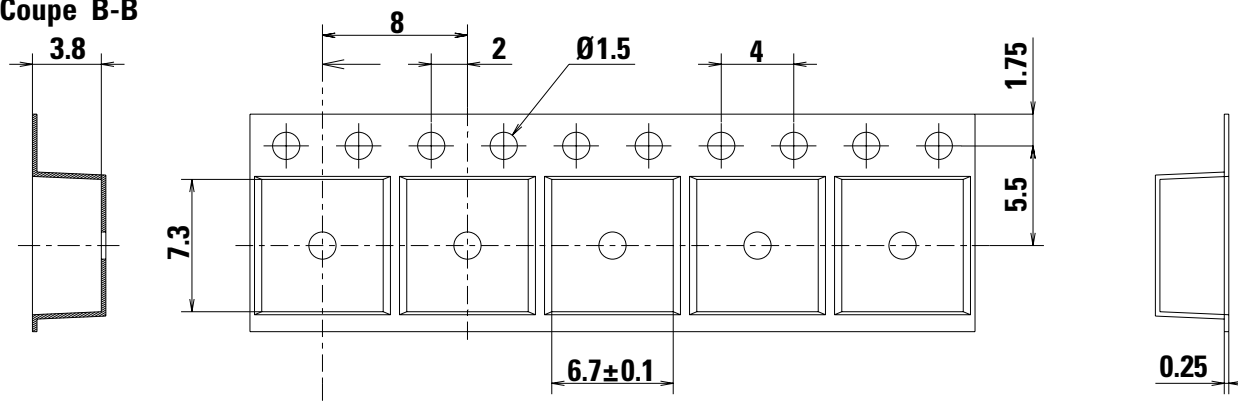


Packaging Details

| Type | Tape & reel |
|------------------------------|--|
| Number of Parts in Packaging | 2,000 |
| Other Information | Tape and reel per EIA 481 |
| Transport Conditions | According to specification NF H00-060 |

Packaging (mm)

Coupe B-B



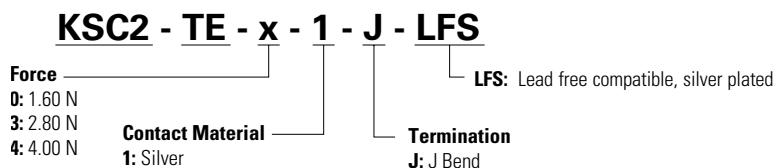
KSC2 TE Series

Tireless Endurance, Sealed Tactile Switch for
SMT 6.2 x 6.3 mm, with 3.5mm Height Soft Actuator



Ordering Number

Our easy build-a-switch concept allows you to mix and match options to create the switch you need. To order, select desired option from each category and place it in the appropriate box. For any part number different from those listed above, please consult your local representative.



Mechanical Characteristics

| Littelfuse Orderable Part Number | Description | Contact & Terminals Plating | Terminals | Operating Force Fa (Newtons) | Tactile ratio (min) | Operating Life (operations) | Electrical Travel (mm) | Electrical Height from PCB (mm) |
|----------------------------------|---------------|-----------------------------|-----------|------------------------------|---------------------|-----------------------------|------------------------|---------------------------------|
| Y29A11332FP | KSC2TE01J LFS | Silver | J | 1.6±0.6 | 25% | 10,000,000 | 0.25 | 3.25±0.2 |
| Y29A41332FP | KSC2TE31J LFS | Silver | J | 2.8±0.7 | 25% | 5,000,000 | 0.3 | 3.25±0.2 |
| Y29AE1332FP | KSC2TE41J LFS | Silver | J | 4±1 | 25% | 5,000,000 | 0.35 | 3.2±0.2 |

Note: Life time under electrical load (24 V, 1.3 mA)

Liability Limitation

This datasheet does not provide enough information for applications that require a certain level of quality or safety such as automotive, medical systems, or safety equipment. Please contact customer service for the contractual specification package.

Disclaimer Notice - Information furnished is believed to be accurate and reliable. However, users should independently evaluate the suitability of and test each product selected for their own applications. Littelfuse products are not designed for, and may not be used in, all applications. Read complete Disclaimer Notice at <http://www.littelfuse.com/disclaimer-electronics>.